

Compact Lite Linear Throttle



Built for Control

Stirling Dynamics' Compact Lite Linear Throttle is a generic single axis active inceptor with configurable feel characteristics, able to mimic the form and feel of the subject aircraft. Designed for side placement it can provide feedback forces of up to 294N.

Feature-rich, highly reconfigurable and uses the Stirling SMART-Link technology to ensure rapid deployment and connectivity. Suitable for single or multiple cockpit configurations.

Features

- Programmable feel characteristics
- Real-time control
- Reconfigurable
- Common control interface
- Uses SMART-Link technology

Description Specification

Continuous Operational Force	40lbf (178N)
Active Travel	9" (227mm)
Maximum Velocity	9"/s
Interconnecting Cables	5.5m (max) standard or to customer required length
Grip	Generic, replica or customer supplied
Grip Switch Wiring	All switch channels available via ethernet from ICM
Software Interface	UDP over 1000Base-T Ethernet
Input Power Supply	Via ICM-Lite
Throttle Weight	9.2kg (20.28lb)

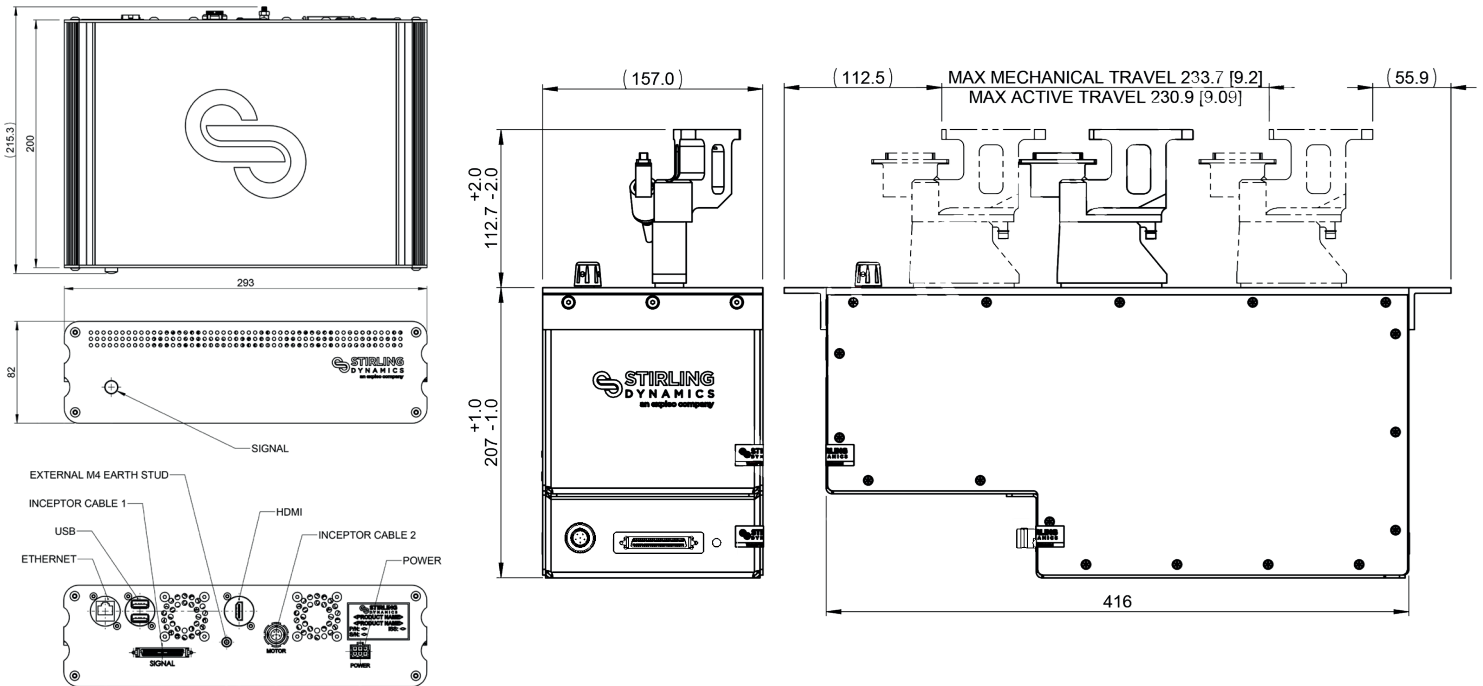
Our products work even better together

With versatility in mind, all of our active controls are commanded by a dedicated electronics Inceptor Control Module (ICM), which provides an ethernet interface allowing minimal integration effort.

From a single fixed wing cockpit to dual rotary cockpit configurations, multiple ICMs can be used in combination to provide designers with total flexibility.

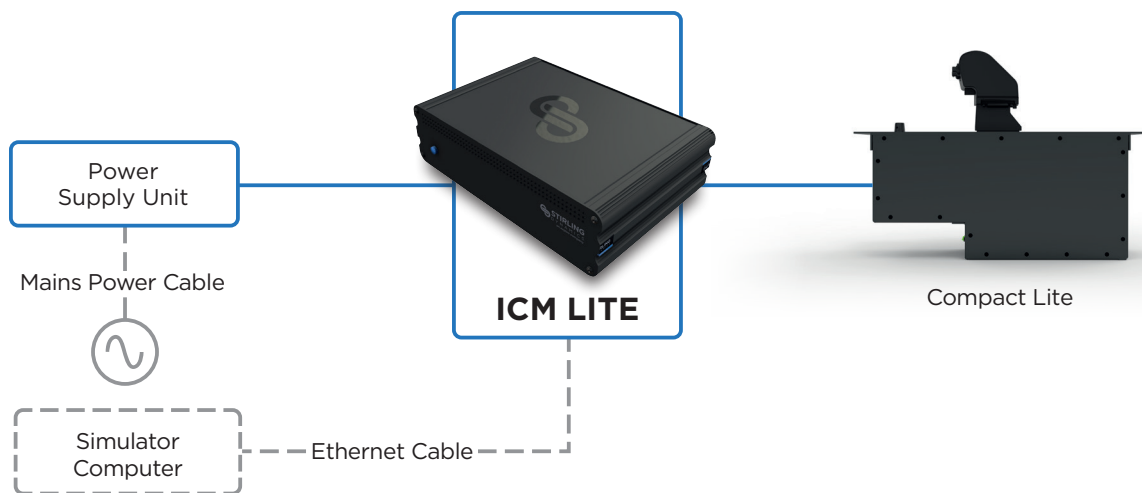


Product Integration



How do I connect and control my new Stirling simulator product?

Stirling Dynamics' active controls interface to your simulator software through UDP messaging over a Local Area Network connection. Multiple systems can be connected via the LAN with their own IP address. With the provided separate GUI (Graphical User Interface), the devices can be initialised with specific settings, or you can send message sequences to configure your devices in real time. Stirling Dynamics will also provide you with all the integration documentation you will need to successfully set up your new control product.



--- Dashed lines supplied by client.